

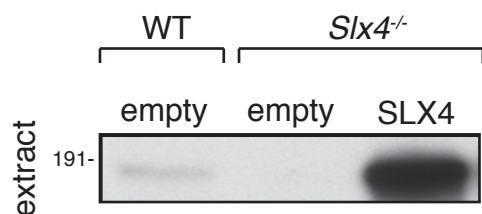
Antibody Datasheet

Product description:-	Anti-SLX4 (1266 – end mouse)
Antigen:-	GST-SLX4 (1266 – end mouse) [DU 19681]
Sheep Number:-	S819C
Formulation:-	Phosphate Buffered Saline
Storage temperature:-	–20 °C
Purification Method:-	Affinity purified against recombinant protein and then depleted against GST

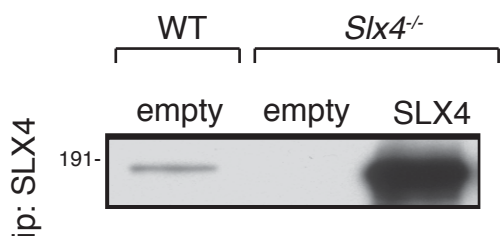
Working Concentration:-

For immunoblotting use at 0.2 ug/ml

For immunoprecipitation use 1 ug of antibody per 1 mg of lysate.

Immunoblotting:

25 ug of whole cell extract from wildtype MEFs, SLX4 null MEFs or SLX4 null MEFs complemented with wildtype SLX4 were subjected to SDS-Page, before being immunoblotted with 0.2 ug/ml of anti-SLX4 (1266-end mouse) antibody.

Immunoprecipitation:

SLX4 was immunoprecipitated from 1 mg of the following cell extracts: wildtype MEFs, SLX4 null MEFs or SLX4 null MEFs complemented with wildtype SLX4, using 1 ug of anti-SLX4 (1266-end mouse) antibody. The immunoprecipitates were subjected to SDS-Page, before being immunoblotted with 0.2 ug/ml of anti-SLX4 (1266-end mouse) antibody.